



TI-S02-27-US  
 Issue 1

کنترل تک

واحد فروش ۰۲۱۶۶۴۷۹۴۸۶

واتساب استعلام ۰۹۱۲۸۴۴۸۷۶۳

# Cast/Ductile Iron Float and Thermostatic Steam Trap FT14, IFT14 and FT14C

## Description

The trap contains a float valve mechanism which modulates to discharge condensate continuously at steam temperature, while non-condensable gases are released by a separate internal balanced pressure thermostatic air vent.

Model	IFT14-4.5 FT14-4.5	IFT14-10 FT14-10	IFT14-14 FT14-14
PMO	65 psi g	150 psi g	200 psi g
Sizes	IFT 1/2", 3/4", only 1/2", 3/4", 1" HC, 1-1/2", 2"		
Connections	NPT		
Construction	1/2", 3/4", 1" HC: Ductile Iron Body 1-1/2", 2": Cast Iron Body All: Stainless Steel Internals		
Options FT14 only	1/2" - 2": Combination (C) Air Vent and SLR (steam lock release)		

## Limiting operating conditions

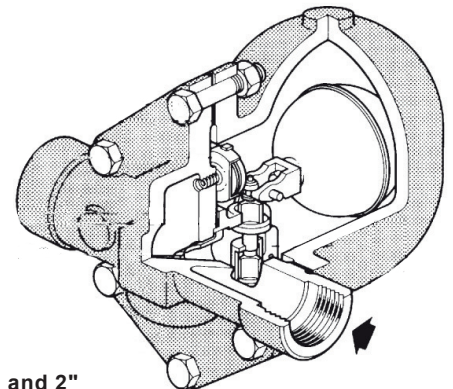
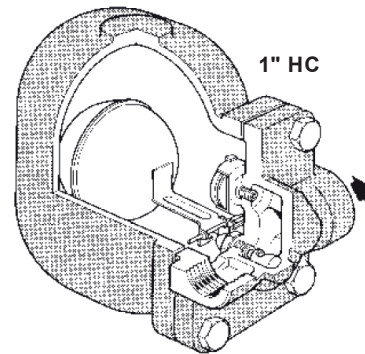
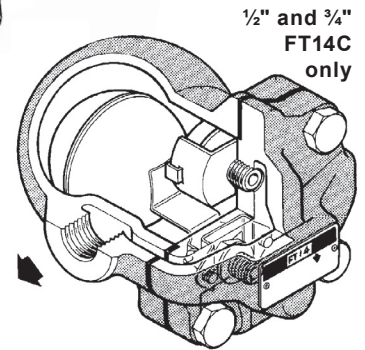
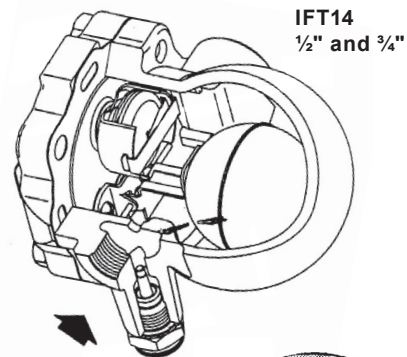
Maximum operating pressure (PMO) IFT14-4.5 ,FT14-4.5,FT14C-4.5	65 psi g (4.5 bar g)
Maximum operating pressure (PMO) IFT14-10, FT14-10, FT14C-10	145 psi g (10 bar g)
Maximum operating pressure (PMO) IFT14-14 ,FT14-14, FT14C-14	200 psi g (14 bar g)
Maximum operating temperature (TMO) IFT14 1/2", 3/4" FT14C	482 °F(250 °C) @ 188 psi g (13 bar g) 392 °F (200 °C) @ 200 psi g (14 bar g)
Maximum operating temperature (TMO) 1" FT14HC	482 °F(250 °C) @ 200 psi g (14 bar g)
Maximum operating temperature (TMO) 1 1/2", 2" FT14	428 °F(220 °C) @ 195 psi g (13.5 bar g) 392 °F (200 °C) @ 200 psi g (14 bar g)
Minimum allowable temperature All IFT, FT14, FT14C	14 °F (-10 °C)

## Typical applications

All process equipment, particularly when controlled by modulating temperature control valves; also for unit heaters, air heating coils, heat exchangers and steam main drip stations

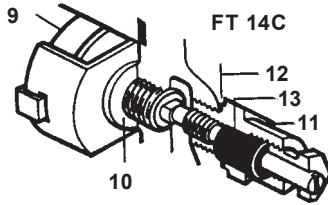
## Capacities

See TIS 2.306

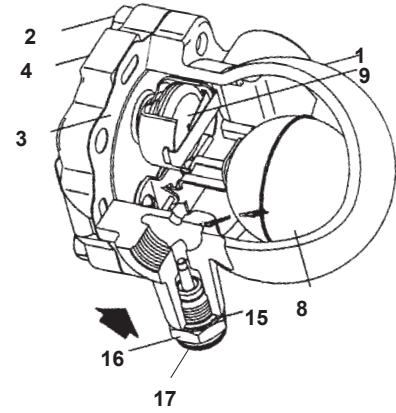


## Materials

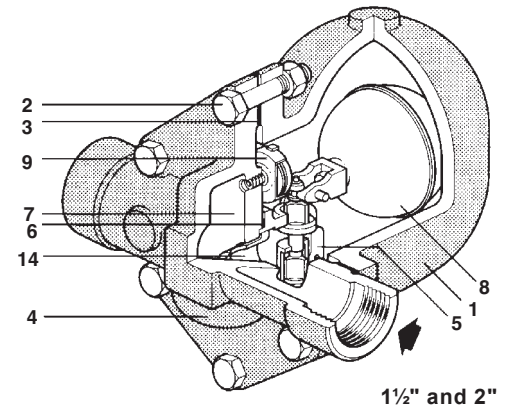
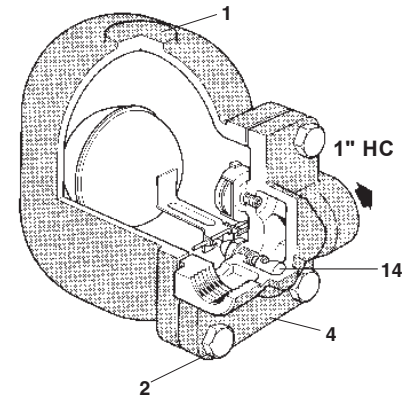
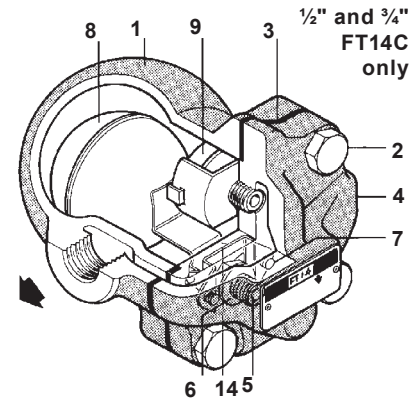
Combination  
Air vent  
SLR unit



**IFT14**  
½" and ¾"  
Sensor Connection standard with  
plug sensor added at installation

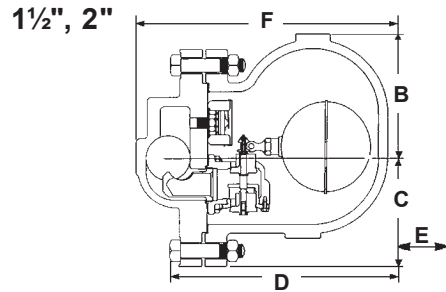
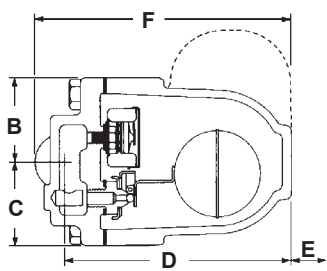
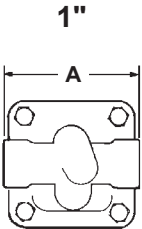
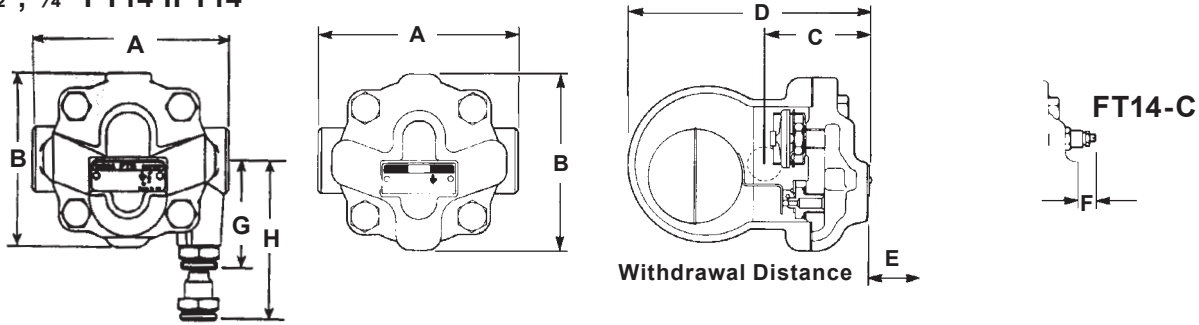


No.	Part	Material
1	Body	½", ¾", 1" Ductile (SG) Iron DIN 1693 GGG 40
		1½", 2" Cast Iron DIN 1691 GG 25
2	Cover bolting	Steel BS 3692 Gr. 8.8
3	Cover gasket	Nickel Reinforced Exfoliated Graphite
4	Cover	½", ¾", 1", 1¼" Ductile (SG) Iron DIN 1693 GGG 40
		1½", 2" Cast Iron
5	Valve seat	½", ¾" Stainless steel
	Valve seat	1" Stainless steel
6	Main valve assembly	1½", 2" Stainless steel
	Valve seat Gasket	½", ¾", 1", 1¼" Stainless steel
7	Main valve assembly gasket	1½", 2" Reinforced Exfoliated Graphite
	Main valve assembly screws	½", ¾" Stainless steel M4 x 6 mm
8	Ball float and lever	1", 1¼" Stainless steel M5 x 20 mm
		Main valve assembly Bolts
9	Air vent	2" Stainless steel M8 x 20 mm
		10
11	SLR	Stainless steel
12	SLR Unit gasket	1", 1½", 2" Mild steel
13	SLR seal	Stainless steel
14	Erosion deflector	Stainless steel
15	Sensor dasket	Stainless steel
16	Sensor SSLI, WLSI optional	Stainless steel
17	Blanking plug standard (not shown)	Steel
18	Inlet baffle (baffle not shown)	1-½", 2" only Stainless steel



**Dimensions/weights (nominal) in inches (mm) and lbs (kg)**

**1/2", 3/4" FT14 IFT14**



Size	A	B	C	D	E	F	G	H	Weight
1/2", 3/4"	4.8	4.2	2.6	5.8	4.1	1.2	2.6	3.9	6.4 lb
	121	107	67	147	105	30	66	98	2.9 kg
1"	4.7	4.3	3.2	7.7	6.3	8.6	-	-	15.0 lb
	120	110	80	195	160	220	-	-	6.8 kg
1 1/2"	10.6	5.1	4.3	9.4	7.9	10.6	-	-	38.5 lb
	270	130	108	238	200	270	-	-	17.5 kg
2"	11.9	5.4	4.9	9.8	7.8	11.3	-	-	52 lb
	300	138	125	250	200	288	-	-	24 kg

**Sample specification**

Steam traps shall be of the mechanical ball float type having iron bodies, horizontal line connections, and all stainless steel internals. Incorporated into the trap body shall be a stainless steel balanced pressure thermostatic air vent capable of withstanding 45°F(25°C) of superheat and resisting waterhammer without sustaining damage. Internals of the trap shall be completely servicable without disturbing the piping. (Optional: The trap shall include an adjustable steam lock release unit.) 14C version.

**Installation**

A pipeline strainer should be installed ahead of any steam trap. Full port isolating valves should be placed to permit servicing. The trap should be installed below the drainage point of the equipment with a collecting leg before the trap, in a position so that the float arm is in a horizontal plane and the float rises and falls vertically, with the flow direction as indicated on the body. (The 1/2" and 3/4" FT14 only trap is supplied with right-to-left flow. If left-to-right or vertical flows are required, cover can be rotated as desired.) Refer to IMI 2.300 or IM-FO1-30 for IFT for complete instructions.

**Maintenance**

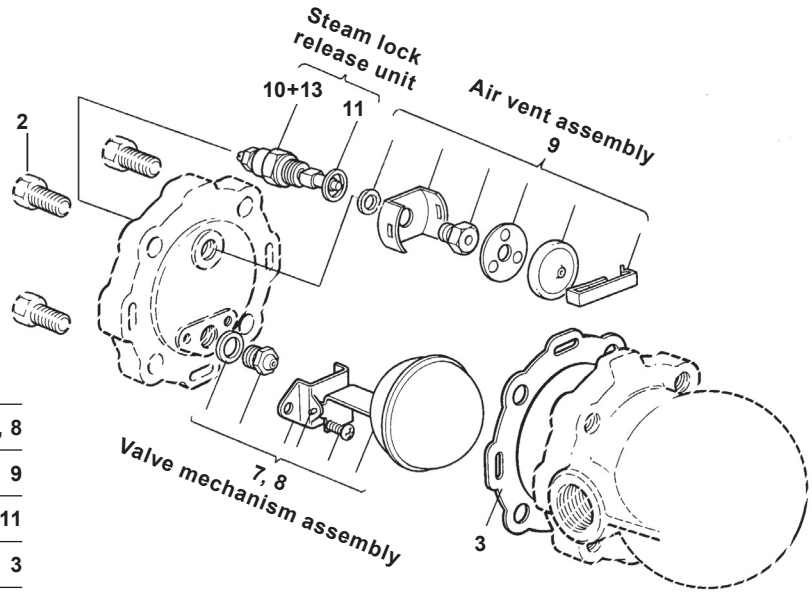
This product can be maintained without disturbing the piping connections. Complete isolation from both supply and return line is required before any servicing is performed. The trap should be disassembled periodically for inspection and cleaning of the valve head and seat, operating mechanism and air vent. Worn or damaged parts should be replaced using a complete valve mechanism assembly and/or air vent assembly. Complete installation and maintenance instructions are given in IMI 2.300, or IM-FO1-30 for IFT which accompanies the product.

## Spare parts

### FT14 and IFT14

1/2" and 3/4"

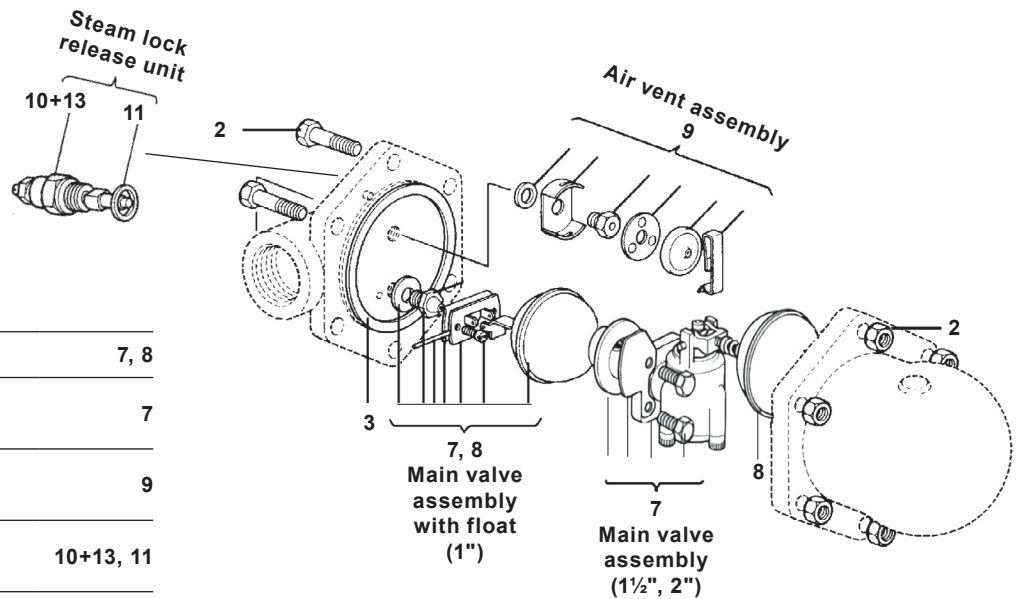
Main valve assembly with float	7, 8
Air vent assembly	9
Steam lock release unit	10+13, 11
Cover gasket (Pkt of 3)	3



### FT14

1", 1 1/2", 2"

Main valve assembly with float (1")	7, 8
Main valve assembly with erosion deflector (1 1/2", 2")	7
Air vent assembly (K not used on 1", 1 1/2", 2")	9
Steam lock release unit (state SLR or C unit)	10+13, 11
Three complete sets of gaskets	3, 6, 10
Set of cover bolts (set of 4) (1")	2
Set of cover bolts and nuts (set of 6) (1 1/2", 2")	2
Ball float (1 1/2", 2") float only	8



The erosion deflector on the 1" is pressed into the body during manufacture and not available as a spare.

**کنترل تک**

واحد فروش ۰۲۱۶۶۴۷۹۴۸۶

واتساب استعمال ۰۹۱۲۸۴۴۸۷۶۳